

STANDARD DEPARTURE
CHART - INSTRUMENT
(SID) - ICAO

ALMATY APPROACH 118.3
ALMATY RADAR 126.8
ALMATY TOWER 119.4
ALMATY ATIS (EN) 129.8
ALMATY ATIS (RU) 135.1

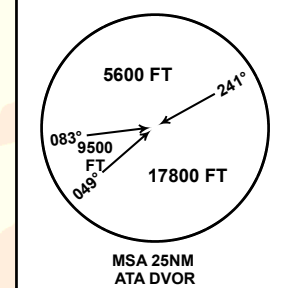
TRANSITION ALT
10000 FT

(RNAV 1 SID BASED ON GNSS)
ETEDA 1J, TIPSA 1A, TUKTO 1A

ALMATY
RWY 23L/23R

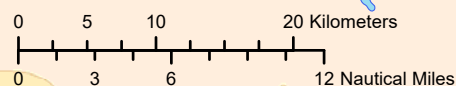
DIST IN NM
ALT, ELEV IN FT
BRG ARE MAGNETIC
VAR5°E

SURVEILLANCE RADAR REQUIRED



SID DESIGNATOR	RESTRICTIONS	CLIMB TO
ETEDA 1J	A MNM climb gradient of 3.9% is required until passing FL 200, due to airspace structure. If unable to comply, inform ATC. MAX speed 240 KT IAS during first turn	10000 FT Expect further climb from ALMATY APP
TIPSA 1A	MAX speed 240 KT IAS during first turn	10000 FT Expect further climb from ALMATY APP
TUKTO 1A	MAX speed 240 KT IAS during first turn	10000 FT Expect further climb from ALMATY APP

CHANGE: APP FREQ, editorial.



TABULAR DESCRIPTION

ETEDA 1J RWY 23L /23R											
Serial Number	Path Descriptor	Waypoint Identifier	Fly - over	Course °M(°T)	Magnetic Variation(°)	Distance NM	Turn Direction	Altitude FT	Speed KT	VPA (°)	Navigation Specification
10	CF	AA203	Y	231(235.8)	5.12	3.4	-	+3000	-240	2.2	RNAV1
20	DF	AA208	-		5.12	12.4	R	-10000		2.2	RNAV1
30	TF	AA024	-	287(292.2)	5.12	11.5	L	+8600		2.2	RNAV1
40	TF	AA029	-	342(346.9)	5.12	9.5	R	+11000		2.2	RNAV1
50	TF	AA028	-	342(346.8)	5.12	12.5	-	+FL140		2.2	RNAV1
60	TF	AA034	-	342(346.8)	5.12	11.5	-	+FL160		2.2	RNAV1
70	TF	ETEDA	-	16(21.4)	5.12	17.1	R	+FL200		2.2	RNAV1

WAYPOINT LIST

ETEDA 1J RWY 23L /23R		
Waypoint Identifier	Coordinates	
DER	432044.98N	0770119.63E
AA203	431849.98N	0765727.89E
AA208	432728.82N	0764838.42E
AA024	433148.94N	0763357.35E
AA029	434104.20N	0763059.60E
AA028	435314.65N	0762704.33E
AA034	440426.36N	0762326.52E
ETEDA	442024.00N	0763206.00E
DER	432044.98N	0770119.63E

TABULAR DESCRIPTION

TIPSA 1A RWY 23L /23R											
Serial Number	Path Descriptor	Waypoint Identifier	Fly - over	Course °M(°T)	Magnetic Variation(°)	Distance NM	Turn Direction	Altitude FT	Speed KT	VPA (°)	Navigation Specification
10	CF	AA203	Y	231(235.8)	5.12	3.4	-	+3000	-240	1.9	RNAV1
20	DF	AA208	-		5.12	12.4	R	-10000	-	1.9	RNAV1
30	TF	AA024	-	287(292.2)	5.12	11.5	L	+7800	-	1.9	RNAV1
40	TF	USUGA	-	287(291.7)	5.12	11.3	-	+10000	-	1.9	RNAV1
50	TF	TIPSA	-	268(273.3)	5.12	34.7	L	+FL170	-	1.9	RNAV1

WAYPOINT LIST

TIPSA 1A RWY 23L /23R		
Waypoint Identifier	Coordinates	
DER	432044.98N	0770119.63E
AA203	431849.98N	0765727.89E
AA208	432728.82N	0764838.42E
AA024	433148.94N	0763357.35E
USUGA	433600.00N	0761934.00E
TIPSA	433809.00N	0753149.00E

TABULAR DESCRIPTION

TUKTO 1A RWY 23L /23R											
Serial Number	Path Descriptor	Waypoint Identifier	Fly - over	Course °M(°T)	Magnetic Variation(°)	Distance NM	Turn Direction	Altitude FT	Speed KT	VPA (°)	Navigation Specification
10	CF	AA203	Y	231(235.8)	5.12	3.4	-	+3000	-240	1.9	RNAV1
20	DF	AA208	-		5.12	12.4	R	-10000	-	1.9	RNAV1
30	TF	AA024	-	287(292.2)	5.12	11.5	L	+7800	-	1.9	RNAV1
40	TF	AA029	-	342(346.9)	5.12	9.5	R	+9700	-	1.9	RNAV1
50	TF	AA028	-	342(346.8)	5.12	12.5	-	+FL120	-	1.9	RNAV1
60	TF	AA034	-	342(346.8)	5.12	11.5	-	+FL150	-	1.9	RNAV1
70	TF	TUKTO	-	298(303.6)	5.12	12.9	L	+FL170	-	1.9	RNAV1

WAYPOINT LIST

TUKTO 1A RWY 23L /23R		
Waypoint Identifier	Coordinates	
DER	432044.98N	0770119.63E
AA203	431849.98N	0765727.89E
AA208	432728.82N	0764838.42E
AA024	433148.94N	0763357.35E
AA029	434104.20N	0763059.60E
AA028	435314.65N	0762704.33E
AA034	440426.36N	0762326.52E
TUKTO	441136.00N	0760830.00E